

Technical Information

01 / 2003

911 GT3 Cup - 2003 Model

In the course of our first tests with the 2003 MY 911 GT3 Cup cars, we discovered the following problems as listed below (items 1 through 5). Since these problems occurred after we had already delivered some of the vehicles, they do not refer to all 2003 MY cars. The following 2003 MY vehicles do **not** include the modifications concerned and therefore need to be modified subsequently:

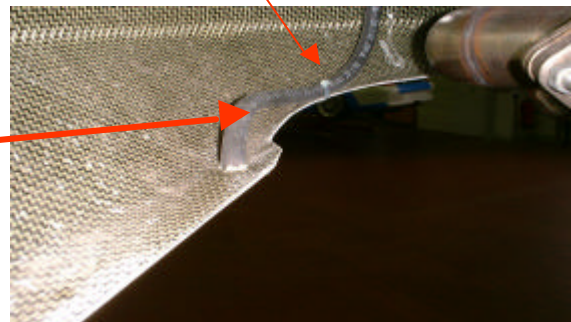
Vehicle Identification numbers: **WPOZZZ99Z3S69** 8002 through 8060
8062 through 8087
8090 through 8091
8093
8097 through 8099
8137

1. Relocation of the ventilation hose for the steering oil tank:

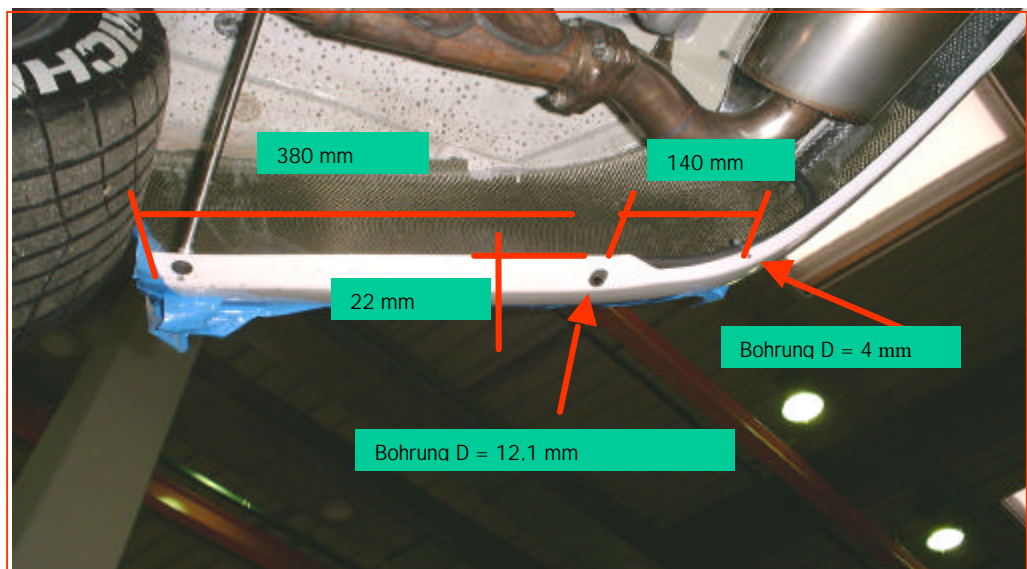
The ventilation hose for the steering oil tank turned out to be too short. Spilling oil might reach the exhaust manifold. We therefore recommend to mount the hose delivered to you according to the following mounting instructions:



Befestigung mit Kabelbinder
N.020.904.4

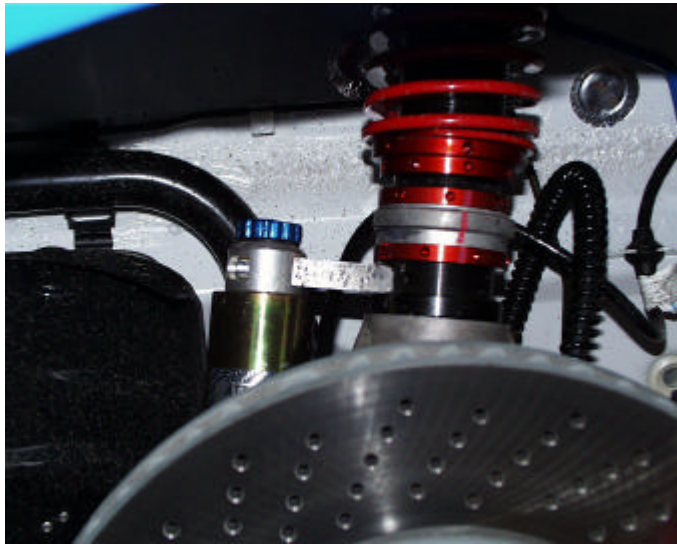


Entlüftungsschlauch
996.201.152.92



2. Relocation of the ABS combined line on front axle:

The new suspension struts as mounted in the 2003 MY 996 Cup car require the relocation of the ABS combined lines on the front axle. The lines must be installed behind the connecting piece between suspension strut and expansion tank (viewed from the position of the ABS sensor, see illustration).



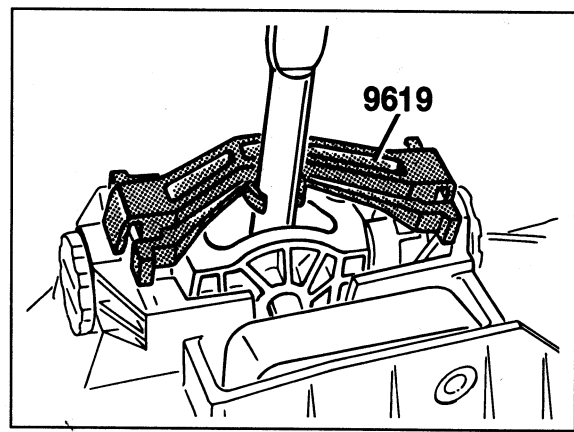
3. Roll Cage Bolstering:

Changes in the Regulations require that the roll cage bolstering in the 2003 MY car be modified – a change for the worse for tall drivers. In order to optimise the distance between the driver's helmet and the bolstering, we recommend to turn the bolstering in the head area by approx. 30° so that the phase turns towards the head!

4. Adjustment of shift gutter by using setting gauge:

We recommend to check the shift gutter after the first roll-out by using the adjusting gauge delivered with the car and to adjust it if necessary.

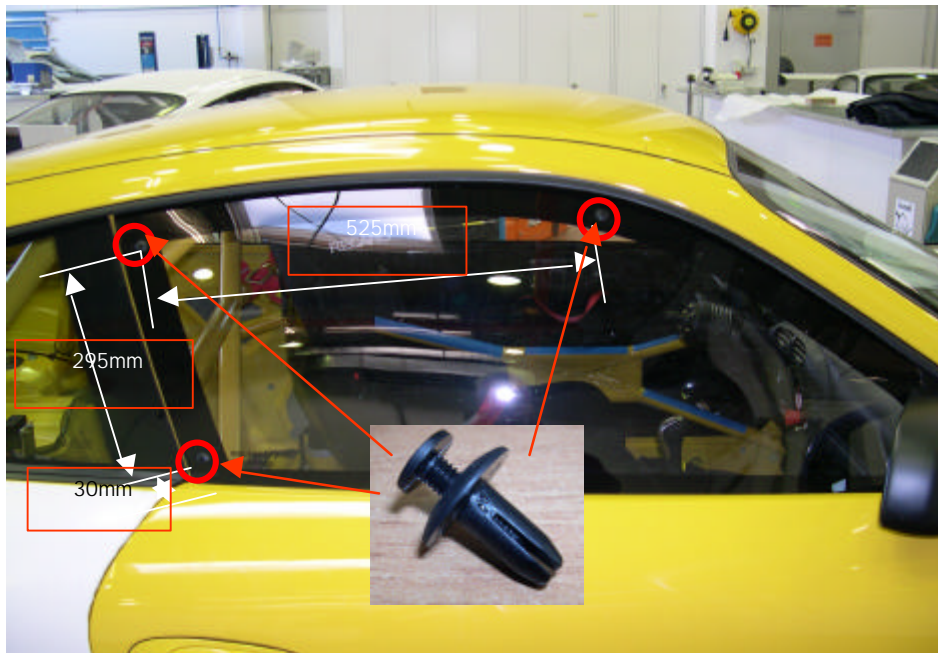
- a. Turn gear-shift lever to neutral position and clip special tool No.9619 (see illustration) on gear-shift lever.
- b. Move the gauge downwards along the gearshift-lever tube.
- c. The setting gauge must engage without clearance (i.e. the gear-shift lever being immovable).



5. Mounting of front side windows:

The bonding of side window / door frame may dissolve due to high air temperature and humidity. We recommend to additionally fix the front side windows mechanically. The part number of the clip fastener is 996.542.875.90.

Mechanical fixing



5.8mm bore for clip

